

High Lifter Products, Inc.
780 N Professional Drive
Shreveport, LA 71105



(318) 524-2270
Fax (318) 524-2297

Polaris 800 Ranger RZR Lift Kit Installation Instructions

Read Before Installation!

This product is designed for use on ATVs on which additional ground clearance and fender clearance is desired. It is designed for utility type, slower-speed use on relatively flat terrain in deep mud or snow. Although we have many thousands of satisfied lift kit customers and over 400 franchised dealers selling and installing lift kits, purchasers should be aware that use of this product may increase the frequency of required maintenance, part wear, and will raise the center of gravity on your ATV increasing risk of roll-over on side hills, ditches or other steep terrain.

We recommend that wider tires and/or wheel spacers be used to achieve a wider stance and to improve stability of the ATV. Riders should be advised that the handling characteristics of a taller ATV are different and require extra care when riding on side hills or off-camber situations. If you further raise the center of gravity by adding heavy loads to racks or seats, the ATV must be operated with care, at slower speeds or on relatively flat ground.

Operation of an ATV with or without a lift kit, while or shortly after consuming alcohol or drugs, subjects the rider to the risk of serious bodily harm or possible death. This is compounded if the rider does not wear an approved helmet and other safety gear. High Lifter urges that all approved safety gear be worn when riding an ATV.

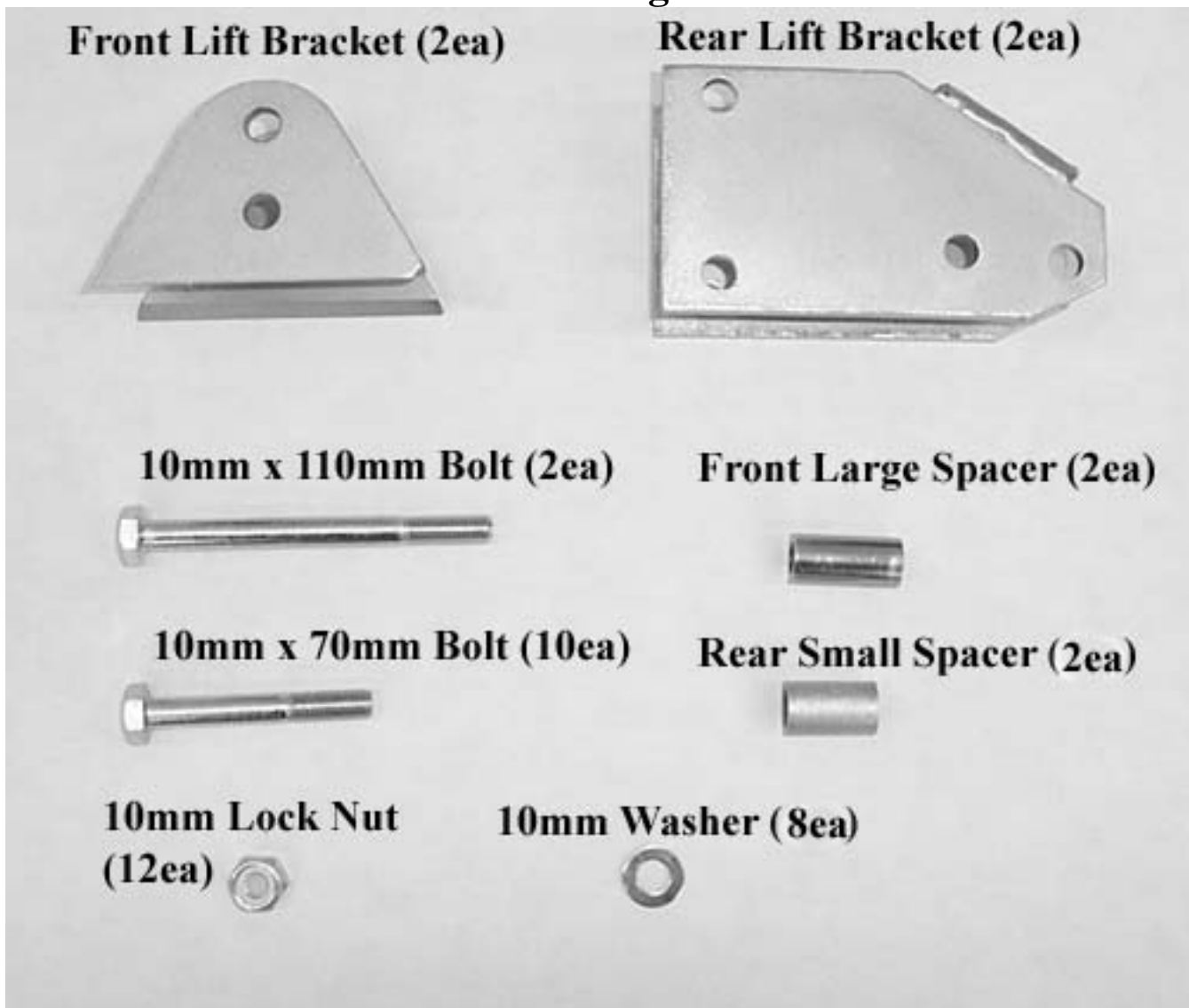
If this is not what you expected, or is not consistent with your intended use, you should return the product immediately to the seller, before installation, for a refund of the purchase price; less any fees. After installation, product is warranted for 90 days for defects in workmanship and materials. Warranty is limited to refund of the purchase price or replacement of the kit, at the seller's option. It does not include any other parts, labor, components, or consequential damages.

Safety Note: The Polaris Ranger RZR 800 is an extremely powerful machine with rapid acceleration and great handling characteristics. It is however relatively narrow so as to be able to maneuver trails. When lifted and mounted with oversized tires the RZR may be turned over relatively easily by sharp turns at speed or when accelerating.

High Lifter recommends that extreme care be exercised and that the machine only be operated by experienced drivers and that all safety restraints and nets be used at all times. If this is not what you expected the kit may be returned and purchase price refunded before installation.

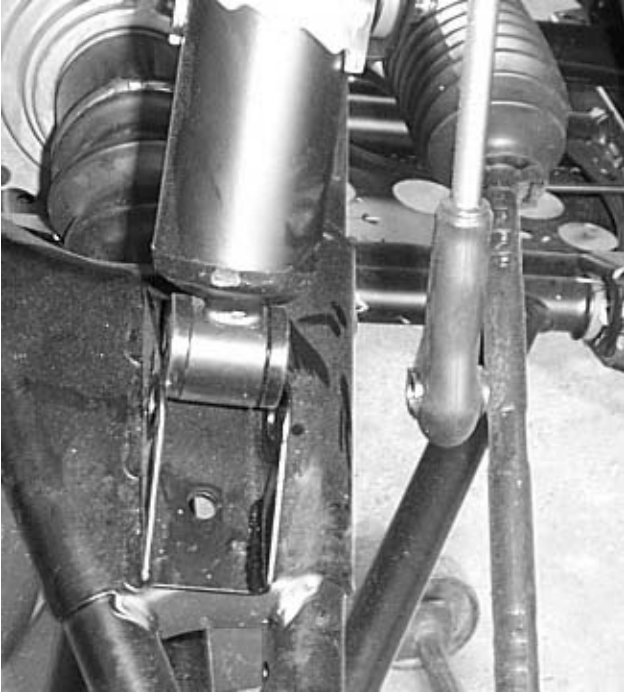
IT IS ALSO HIGHLY RECOMMENDED THAT 1.5" WHEEL SPACERS BE USED SO AS TO INCREASE THE WIDTH AND STABILITY OF THE MACHINE. HIGH SPEED MANEUVERS SHOULD BE AVOIDED WHEN THE MACHINE HAS BEEN LIFTED AND LARGER TIRES MOUNTED.

Parts Diagram

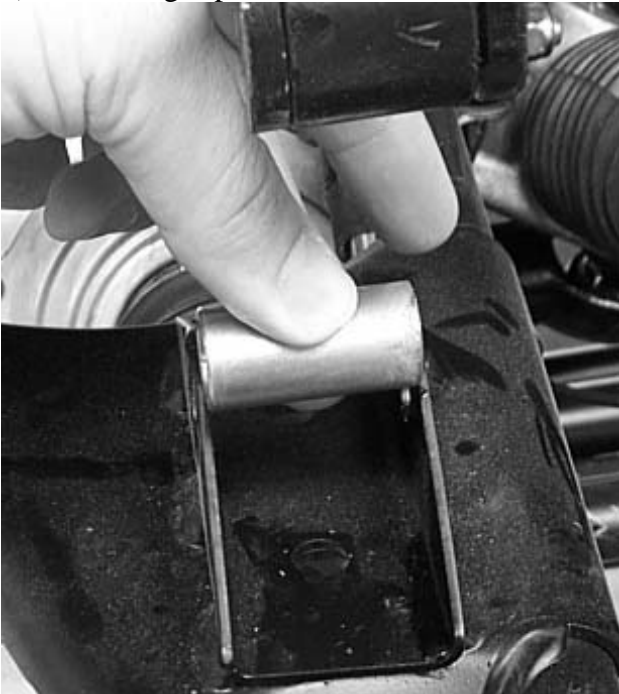


Front Lift Installation

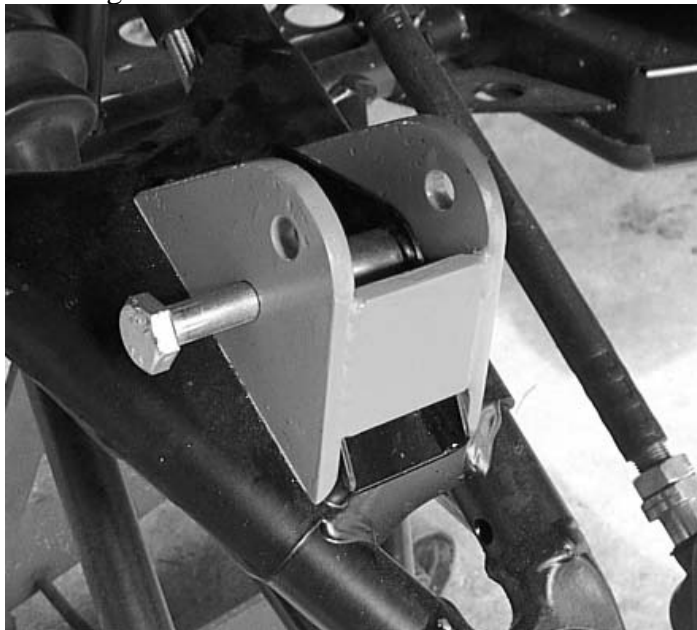
- 1) Place ATV transmission in park. Place jack under center of ATV front end and lift until front wheels clear the ground. Be careful to support ATV properly so that it is securely supported so that A-arms and shocks can droop to full extension.
- 2) Remove front wheels.
- 3) Remove the bottom of the front shocks, stabilizer rod, and small spacer.



- 4) Insert large spacer between the shock mount tabs.



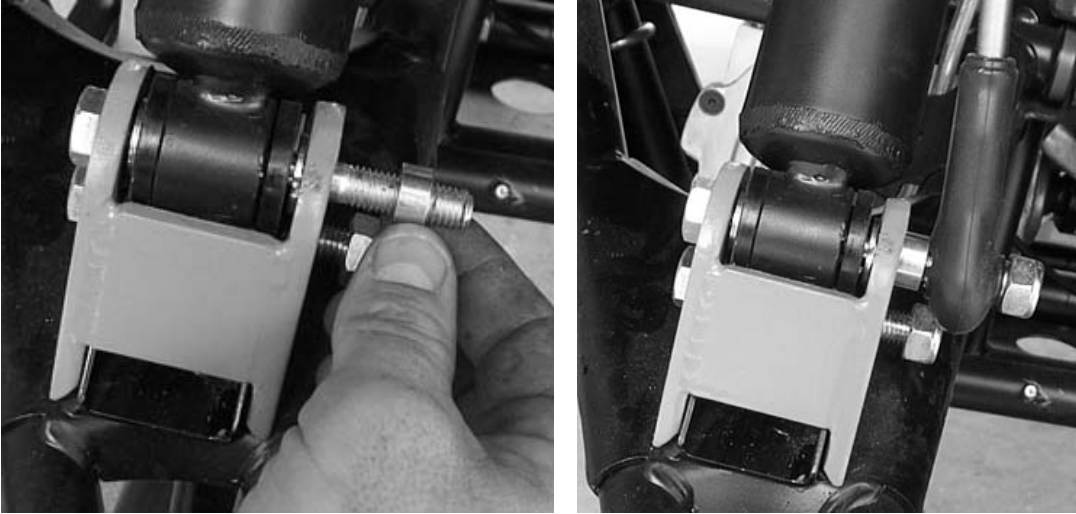
- 5) Place the front lift bracket onto the front shock mount. Connect the Front lift bracket to the frame using the 10mm x 70mm hex bolts and 10mm lock nuts.



- 6) Next, insert the bottom of the shock into the top of the bracket. Place the 10mm flat washers inside of the bracket on either side of the shock.



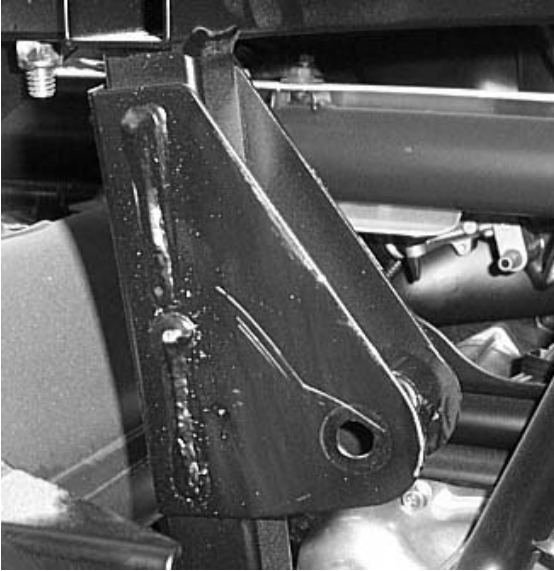
- 7) Insert the 10mm x 110mm hex bolt through the bracket and shock. Connect the stabilizer rod and spacer to the outside of the lift bracket and fasten using the 10mm lock nut.



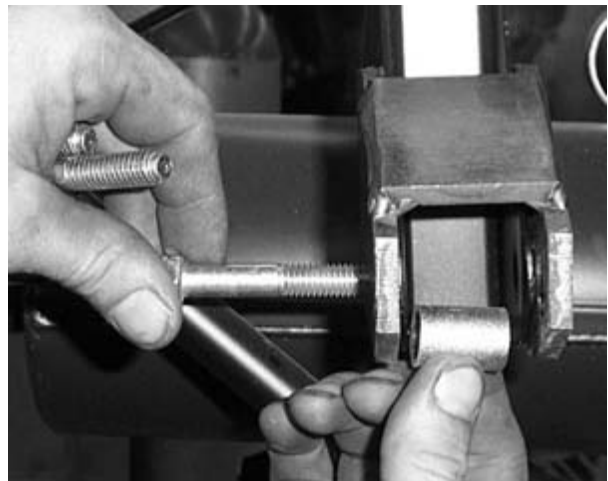
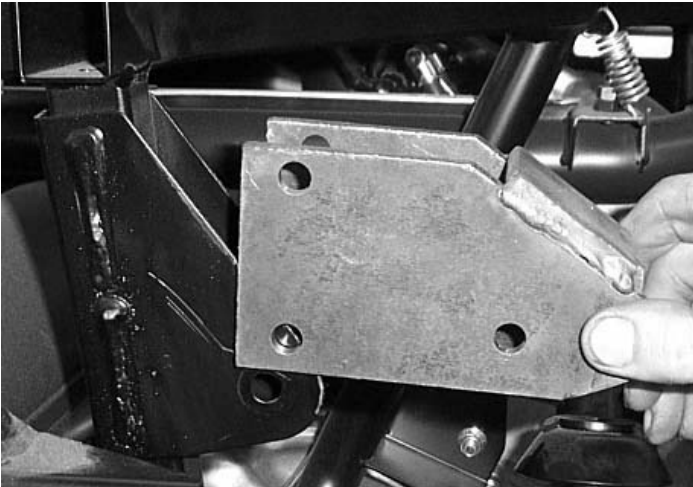
- 8) Repeat steps for opposite side.
- 9) Lower the jack and place the wheels back on the ATV.

Rear Lift

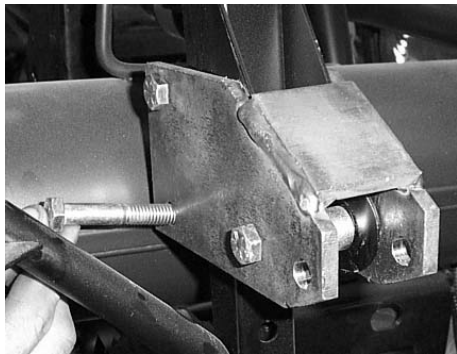
- 1) Place jack under ATV at the rear of the bottom skid plate and lift until the weight is off the suspension. Be careful to secure the ATV properly so as not to fall off the jack.
- 2) Remove the wheels.
- 3) Remove the top of the shock from the frame and jack the ATV up an additional 1"-2".



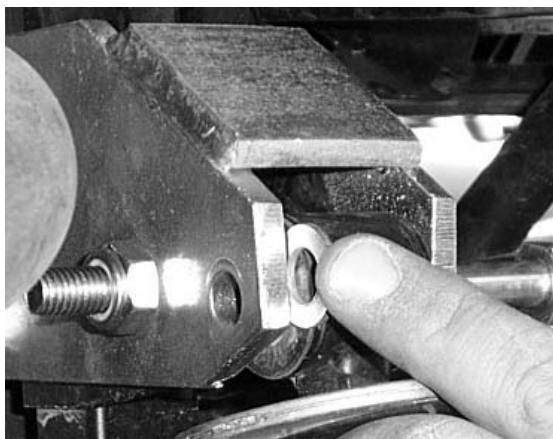
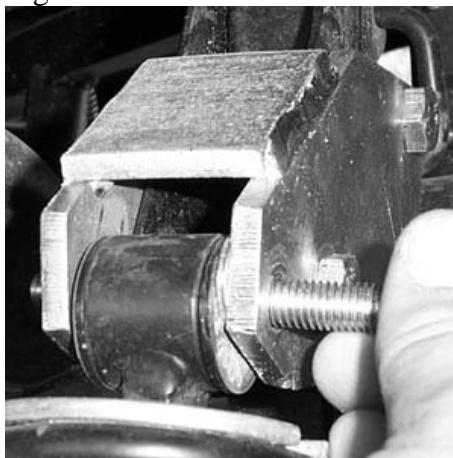
- 4) Place the rear lift bracket onto the frame and insert rear smaller spacer between the shock mounting tabs.



- 5) Finish connecting the back side of the rear lift bracket using 10mm x 70 mm bolts and 10mm lock nuts.



- 6) Insert the top of the shock to the bottom of the bracket and fasten using the 10mm x 70mm hex bolt, two 10mm flat washers, and 10mm lock nut. Place the 10mm flat washer on both sides of the top shock, to the inside of the brackets and fasten tight with the 10mm lock nut.



- 7) Repeat this process on the other side.
- 8) Tighten all bolts to manufacturer's torque specifications. Install the wheels, torque wheel lug nuts to manufacturer's specifications, lower and remove jack. Check for clearance problems or misalignment.
- 9) Re-torque lug nuts after the first ride.